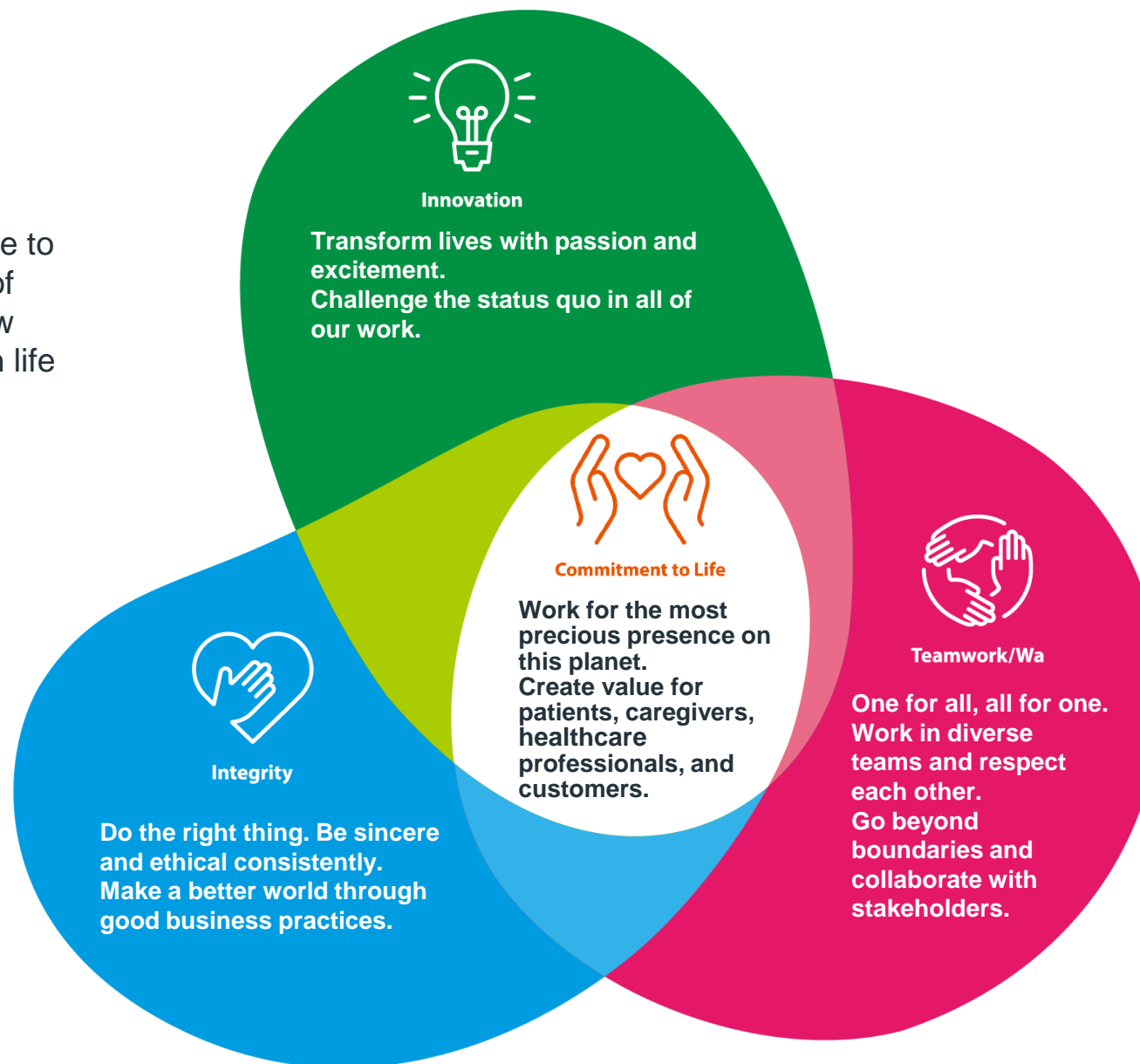


Our Philosophy

The Kyowa Kirin Group companies strive to contribute to the health and well-being of people around the world by creating new value through the pursuit of advances in life sciences and technologies.

Core Values

"Core Values" are a way of thinking and attitude that supports the activity of each officer and employee belonging to the Kyowa Kirin Group. It consists of the core concept "Commitment to Life" and three key words.



Our New Vision toward 2030

Our New Vision toward 2030

Kyowa Kirin will realize the successful creation and delivery of life-changing value that ultimately makes people smile, as a Japan-based Global Specialty Pharmaceutical company built on the diverse team of experts with shared passion for innovation.

Provide pharmaceuticals for unmet medical needs

We are focused on developing medicines for diseases where there is a clear patient need for new options. We make full use of multiple therapeutic modalities, including biotechnology such as antibody technology, and beyond, building on our Kyowa Kirin established strengths.

Address patient-centric healthcare needs

We will meet the needs of patients and society by providing value across the entire patient care pathway, delivering cutting-edge science and technology, grounded in our in-depth pharmaceutical knowledge and expertise.

Retain the trust of society

We pursue world-class product quality and operational excellence to grow our business in ways which build long-term trust with our stakeholders.

* Make patients smile through dramatic improvements in quality of life by identifying the unmet medical needs of people battling with medical conditions and by creating and supplying new drugs or services that help them overcome those challenges.

