



Corporate Profile

A young girl with long brown hair, wearing a blue denim jacket, is shown in profile, blowing on a dandelion seed head. The background is a clear blue sky with many dandelion seeds floating away. The scene is captured in a soft, natural light, suggesting a bright, sunny day.

Life-changing

Kyowa Kirin Co., Ltd.

Our Philosophy and Core Value

Our Philosophy

The Kyowa Kirin Group companies strive to contribute to the health and wellbeing of people around the world by creating new value through the pursuit of advances in life sciences and technologies.



Innovation

Transform lives with passion and excitement.
Challenge the status quo in all of our work.

Core Values



Commitment to Life

Work for the most precious presence on this planet.
Create value for patients, caregivers, healthcare professionals, and customer.



Integrity

Do the right things.
Be sincere and ethical consistently.
Make a better world through good business practices.



Teamwork/Wa

One for all, all for one.
Work in diverse teams and respect each other.
Go beyond boundaries and collaborate with stakeholders.

Vision 2030

Kyowa Kirin will realize the successful creation and delivery of life-changing value* that ultimately makes people smile, as a Japan-based Global Specialty Pharmaceutical company built on the diverse team of experts with shared passion for innovation.

Provide pharmaceuticals for unmet medical needs

We are focused on developing medicines for diseases where there is a clear patient need for new options. We make full use of multiple therapeutic modalities, including biotechnology such as antibody technology, and beyond, building on our Kyowa Kirin established strengths.

Address patient-centric healthcare needs

We will meet the needs of patients and society by providing value across the entire patient care pathway, delivering cutting-edge science and technology, grounded in our in-depth pharmaceutical knowledge and expertise.

Retain the trust of society

We pursue world-class product quality and operational excellence to grow our business in ways which build long-term trust with our stakeholders.

* Make patients smile through dramatic improvements in quality of life by identifying the unmet medical needs of people battling with medical conditions and by creating and supplying new drugs or services that help them overcome those challenges.

Story for Vision 2030 and KABEGOE Principles to Realize Vision 2030

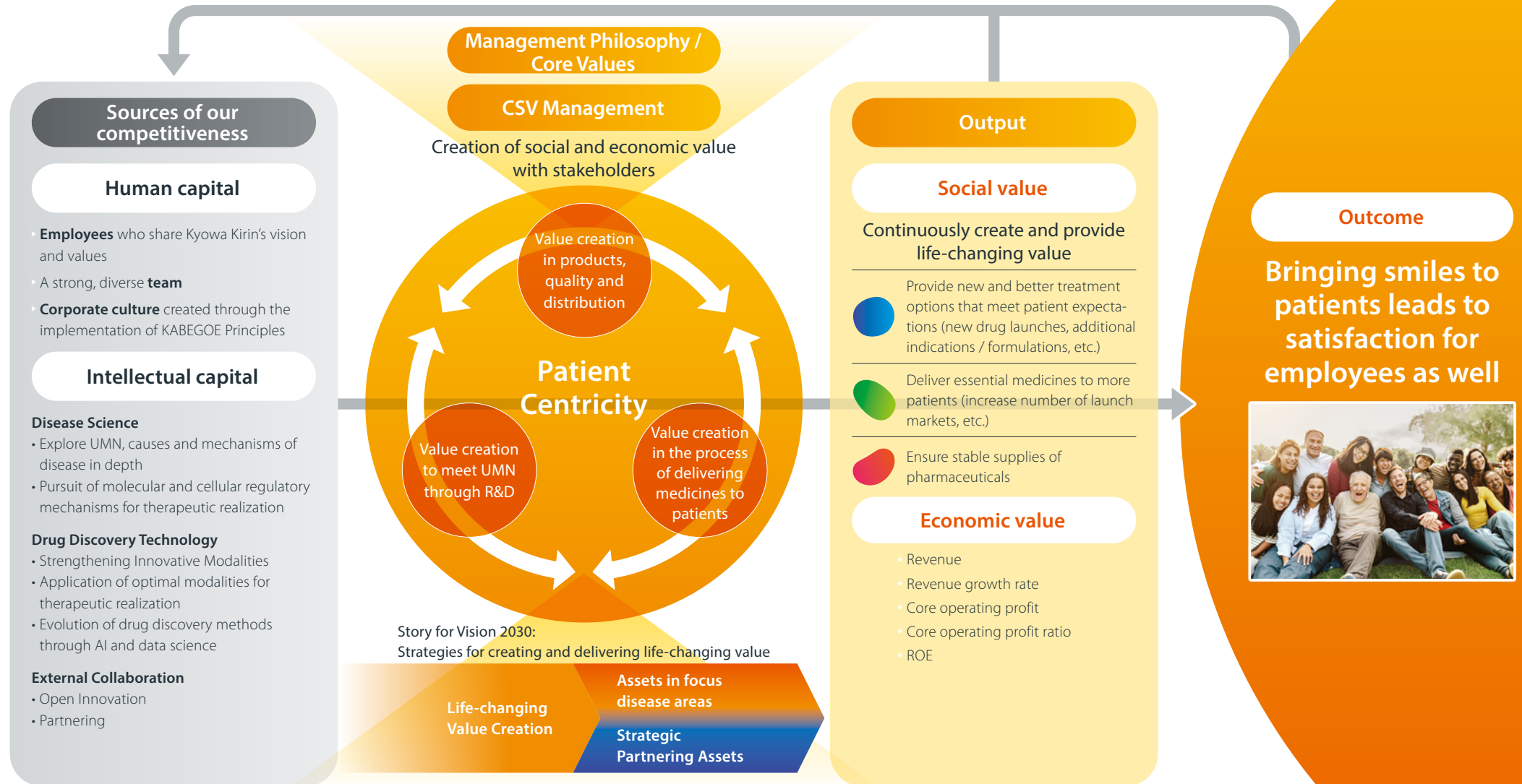
Under its management philosophy, Kyowa Kirin is engaged in activities toward the realization of Vision 2030. While facing significant environmental changes, we have established Story for Vision 2030 and KABEGOE Principles to make the realization of our vision more certain. We will strive to realize our vision and create life-changing value by leveraging our strategy and human capital as driving forces.



Values that flow through the foundation of every activity

Value Creation Story

The Story for Vision 2030, formulated as a strategy to create and deliver life-changing value, is closely linked to the business model outlined in this value creation story—and to intellectual capital—a key source of our competitiveness. Kyowa Kirin strives to create social and economic value by leveraging our human and intellectual capital to make people facing illness smile.



Materiality

Kyowa Kirin has determined its materiality (key management issues) for achieving Vision 2030. In 2023, we clarified the relationship between our vision, strategy, and materiality, and since then, we have been revising our materiality in line with environmental changes when formulating our annual business plans. We will continue to take action as a company to achieve Vision 2030.

Topics for value creation

Strategic pillar

Materiality

Related SDGs

Provide pharmaceuticals for unmet medical needs

- Creation of innovative drugs
- Maximize product value
- Pipeline enrichment



Address patient-centric healthcare needs

- Access to medicine
- Create healthcare solutions beyond medicines

Reinforce human resources and structures that support the creation of Life-changing value

- Talent portfolio
- Corporate culture
- Digital transformation

Topics for value enhancement

Strategic pillar

Materiality

Related SDGs

Retain the trust of society

- Quality assurance and a supply of products
- Reducing environmental impact



Reinforce human resources and structures that support the creation of Life-changing value

- Corporate governance
- Ethics and transparency
- Reinforce risk management

Co-creation of Value through Collaboration with Stakeholders in the Value Chain

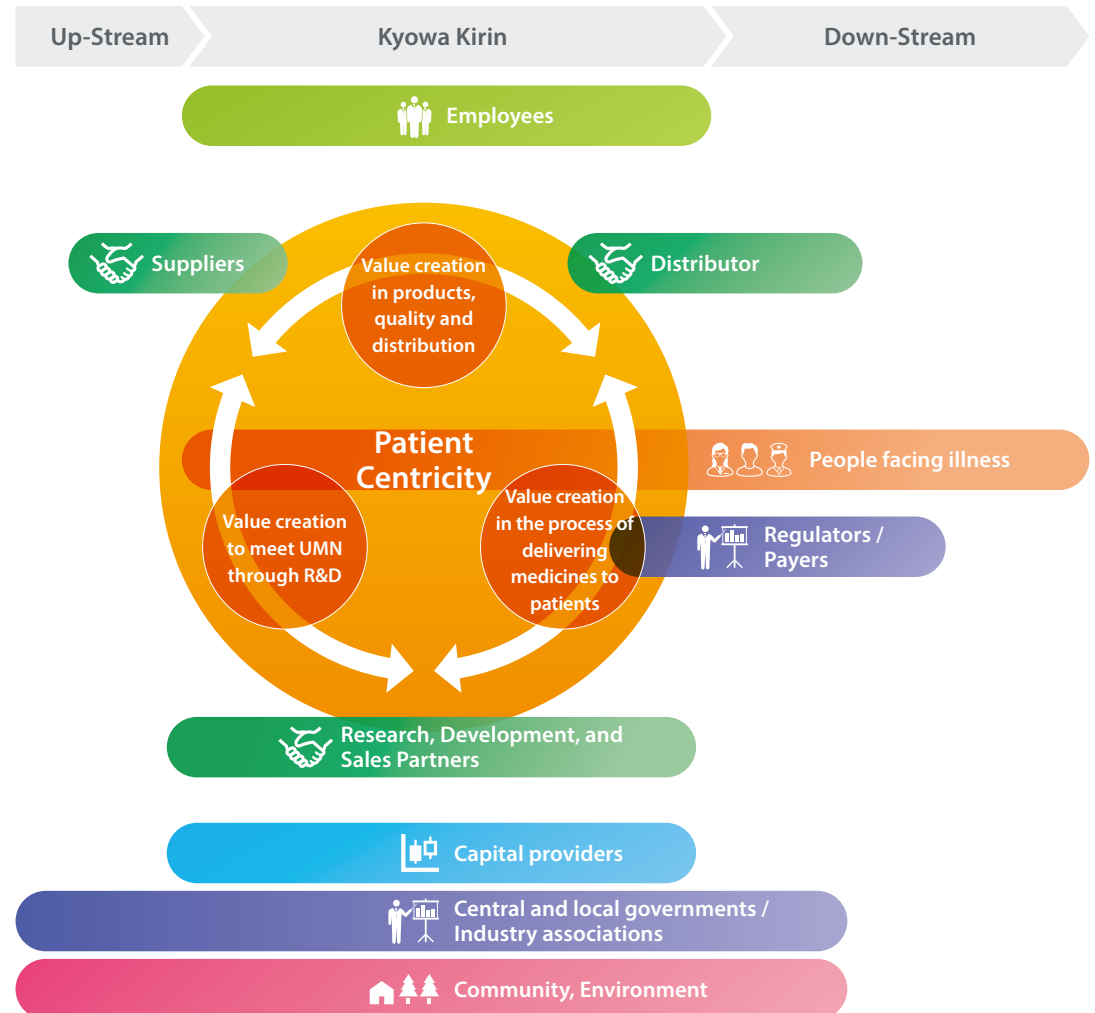
Creating value relies heavily on cooperation and collaboration with various stakeholders. Here we illustrate the connections between stakeholders who play a central role in value creation and the value chain as defined by our business model and value creation story. In particular, we believe that in order to continue creating life-changing value that makes people facing illness smile, it is necessary to listen carefully to their voices at various stages of the value chain. This idea is illustrated in the figure below. Under the concept of Patient Centricity, we will create value together with our stakeholders.

Our stakeholders

Co-creation of value



Links between stakeholders and the value chain



Corporate Data

Corporate Data (As of December 31, 2024)

Kyowa Kirin Co., Ltd.

Head Office

1-9-2, Otemachi, Chiyoda-ku, Tokyo 100-0004, Japan
Tel: 81-3-5205-7200
Fax: 81-3-5205-7182
URL: <https://www.kyowakirin.com/>

Date of Foundation

July 1, 1949

Paid-in Capital

¥26,745 million

Number of Employees

Consolidated: 5,669

Principal Plants

Japan

Takasaki Plant (Takasaki City, Gunma)
Ube Plant (Ube City, Yamaguchi)

R&D Network

Japan

Tokyo Research Park (Machida City, Tokyo)
Fuji Research Park (Sunto-gun, Shizuoka)
CMC R&D Center (Sunto-gun, Shizuoka)
Bio Process Research and Development Laboratories
(Takasaki City, Gunma)

Overseas

Kyowa Kirin, Inc.
Orchard Therapeutics Limited

Network (As of December 31, 2024)

Name of Company	Proportion of Voting Rights Held	Share Capital (1,000)	Principal Business
Japan			
Kyowa Kirin Plus Co., Ltd.	100%	¥100,000	Insurance, wholesale and retail
Kyowa Kirin Frontier Co., Ltd.	100%	¥100,000	Manufacturing and sales of pharmaceuticals
North America			
Kyowa Kirin USA Holdings, Inc.	100%	US\$ 76,300	Supervision and management of specific subsidiaries (U.S.A.)
BioWa, Inc.	100%	US\$ 10,000	Out-licensing of antibody technology (U.S.A.)
Kyowa Kirin, Inc.	100%	US\$ 0.2	R&D and sales of pharmaceuticals (U.S.A.)
Kyowa Kirin Canada, Inc.	100%	CA\$ 0.2	Sales of pharmaceuticals (Canada)
2 other companies			
EMEA			
Kyowa Kirin International plc.	100%	£13,849	Supervision and management of specific subsidiaries (U.K.)
18 other companies			

Name of Company	Proportion of Voting Rights Held	Share Capital (1,000)	Principal Business
Others			
Orchard Therapeutics Limited	100%	US\$ 29,569	Development of pharmaceuticals
Kyowa Kirin Korea Co., Ltd.	100%	KRW 2,200,000	Sales of pharmaceuticals (Korea)
Kyowa Kirin Taiwan Co., Ltd.	100%	TW\$ 262,450	Sales of pharmaceuticals (Taiwan)
13 other companies			
Equity-method affiliates			
FUJIFILM KYOWA KIRIN BIOLOGICS Co., Ltd.	50.0%	¥100,000	Development, manufacturing and sales of biosimilar pharmaceuticals
KKI Grunenthal UK HoldCo Ltd	49.0%	£0.1	Supervision and management of specific subsidiaries (U.K.)
Cowellhex Co., Ltd.	50.0%	¥100,000	Exploration of businesses involving health (research and development, venture investment), business planning and development
11 other companies			

Commitment to Life

Countless precious lives surround us.
Brought into this world, blessed,
raised with loving care – full of dreams, happiness as the goal of life.
Deeply instill in us,
Infinite possibilities for us, a pharmaceutical company.
and know that what we work for – the most precious presence of all on this planet.

Believe in ourselves, believe in our power, believe in what we have built together.
Not a large company, but with qualities like none other.
History so unique we can be proud of, technology unmatched,
And superior human beings that cannot be found elsewhere.

Be brave; do not shy away from challenges. Have passion; break away from the norm.
Innovation is not just about growth – but instead a leap towards the future,
a grand growth with wings.
Wings never to be given to those who settle for the status-quo.

Don't just make medicine. Make people smile, bring light to their lives.
How strongly one longs to live. How deeply one is loved by their loved ones.
How sincerely one desires to help the one life
they dedicate themselves to in the field of medicine.
Stay receptive, sharpen your sensitivities.
Let us become the top company in the world who cares the most for life.
Strength is not what saves the world. A caring heart is what the world calls for.

Strive to become a superb team.

One human being, excellent or not, is ever so powerless,
as a power of one, mistakes, even a possibility.

Show the world the excellence of coming together. Amazing results, when we become one.

Be driven. Think of those fighting for their lives every day.

Their strong devotion to life speaks to our hearts.

Hurry – do not scurry, but we must not stand still. Stay sincere, always – may that be our vow.

We make medicine. This is, our walk of life.

Work, can bring happiness. Remember this, always.

Born on this planet in various parts of the globe, passing through life in different ways,

And like a miracle we found one another – our jobs, our team, our company.

Know this, and be fulfilled, always.

Be thankful of what you have, pour your heart and soul into the mission you were given,

Be proud of your work, the work to save precious lives.

We are, each and everyone of us, Kyowa Kirin.

Taking the walk of life, one life at a time.